

## /// General purpose relay

### XT-17M-B

Time relay, delay-off, 1 C/O, 16 A



#### Description

The XT-17M-B relay is a single function and single-time relay with possibility of fine timing by a potentiometer. To be controlled by supply voltage or control input.

Universal supply voltage 12...240 VAC/DC 50/60 Hz and 1 change-over contact 16 A, AC1. Visual output indication by a red LED, 1 module wide, 35 mm rail mounting

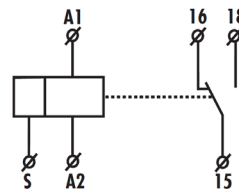
#### Application

Single function delay-off time relay. Suitable for applications where function and time requirements are known. For example to be used for pump delay time, after switching off heating or fan.

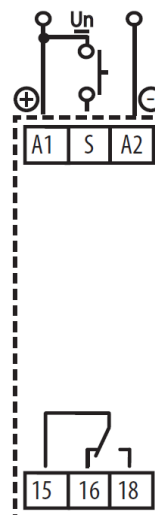
#### Features

- Delay-off
- Single function
- Time ranges 0.1 s...100 h
- 1 C/O contact 16 A / AC1
- 35 mm rail mounting
- LED indicator red and green
- Universal supply voltage 12..240 VAC
- Modular housing, 1 module
- Optional time setting by potentiometer

#### Connection diagram



#### Connection



#### Approvals

EN 60255-6  
 EN 61010-1  
 EN 61812-1



## Time relay XT-17M-B

### Time range

Time range	0.1 s...100 h
Time setting	Potentiometer
Time deviation	5 % mechanical setting
Repeat accuracy	0.2 % set value stability
Temperature coefficient	0..01 % / °C at 20 °C

### Control

Load between S - A2	Yes
Control terminals	A1 - on/off
Max. capacity of cable control	9 nF (AC 230 V), max 20 pcs (1 pc - 1 mA) 12 nF without connected glow-lamps
Impulse length	Min. 25 ms / Max. unlimited
Reset time	Max. 150 ms

### Output

Contacts	1x change-over contact / SPDT (AgNi/Silver alloy)
Rated current	16 A / AC1
Breaking capacity	4000 VA / AC1, 384 W / DC
Inrush current	30 A / < 3 s
Switching voltage	250 V AC1, 24 V DC1
Min. breaking capacity DC	500 mW
Output indication	Red LED
Mechanical life	10 x 10 <sup>6</sup> operations
Electrical life (AC1)	5 x 10 <sup>4</sup> operations

### Supply and measuring

Supply terminals	A1 - A2
Supply voltage	12...240 VAC/DC, 50/60 Hz
Power consumption	2 VA / 1.5 W
Supply voltage tolerance	0.85...1.1 Un
Supply indication	Green LED

### Mechanical characteristics

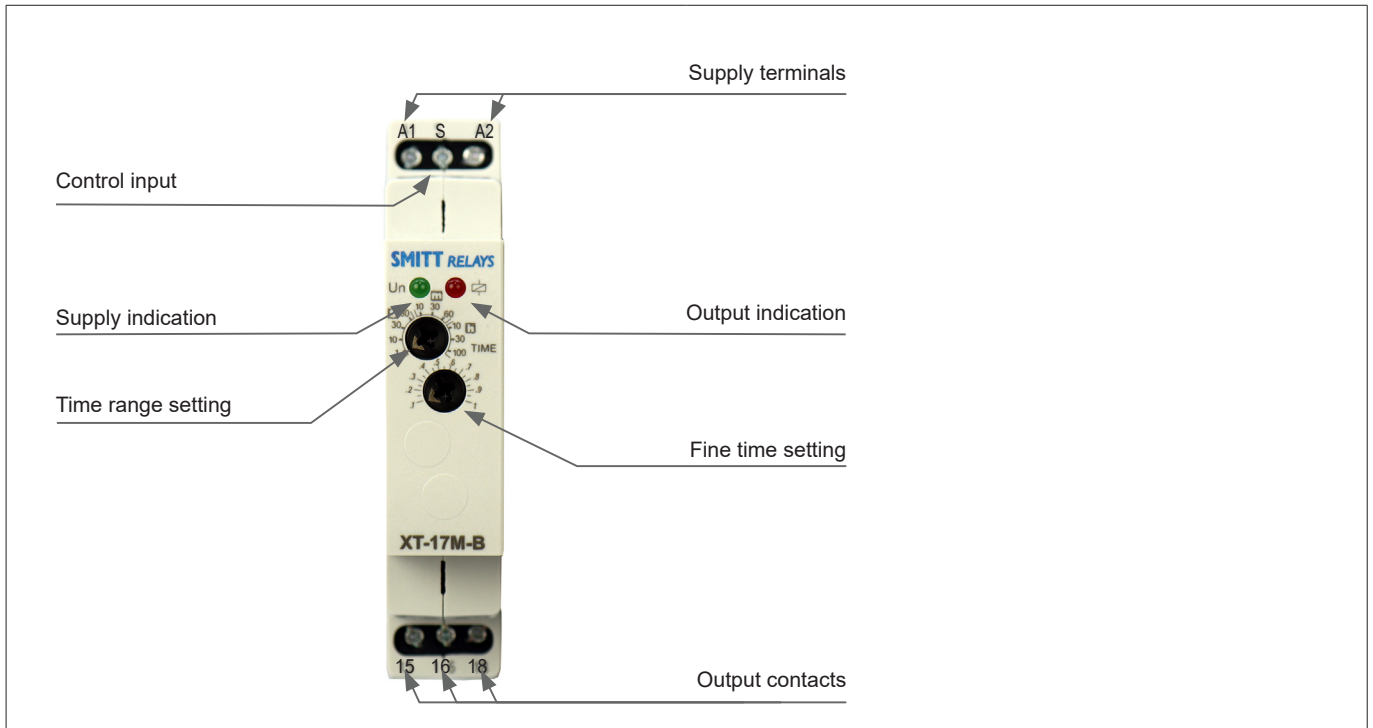
Dimensions (d x w x h)	90 x 17.6 x 64 mm
Weight	61 g

### Environmental characteristics

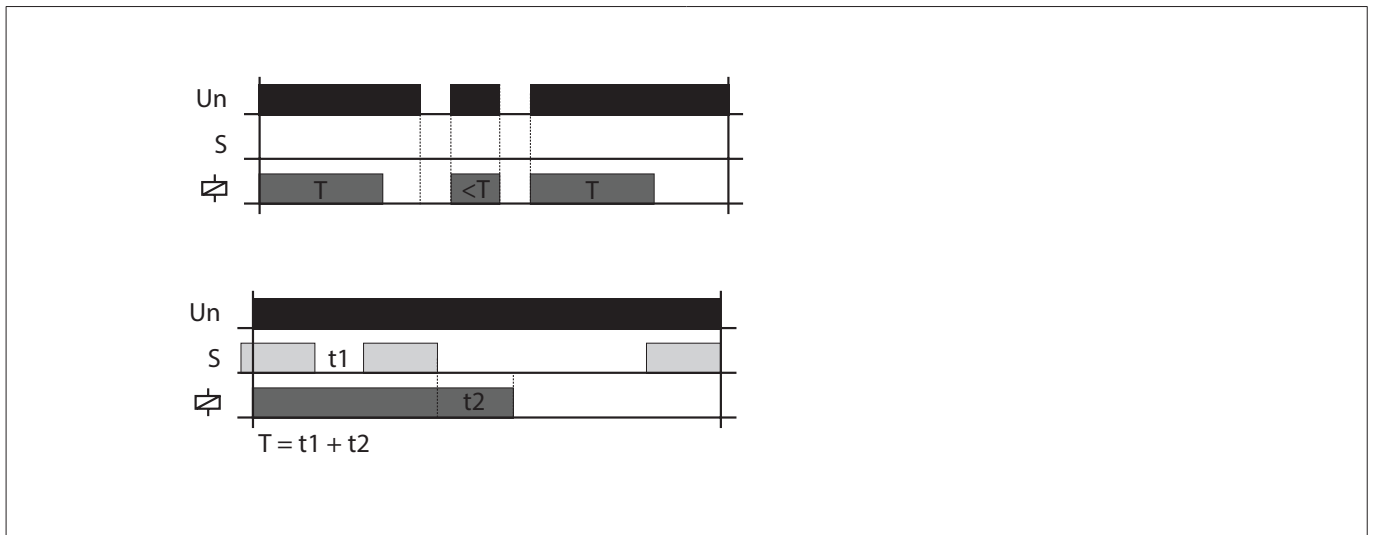
Operating temperature	-20 °C...+55 °C
Storage temperature	-30 °C...+70 °C
Electrical strength	4 kV (supply-output)
Operating position	Any
Mounting	35 mm rail
Protection degree	IP 40 front panel / IP 20 terminals
Overvoltage category	III
Pollution degree	2
Max. cable size	Solid wire max. 1 x 2.5 mm <sup>2</sup> or 2 x 1.5 mm <sup>2</sup> With sleeve max. 1 x 2.5 mm <sup>2</sup>

## Time relay XT-17M-B

### Design



### Functions



**Time relay**  
**XT-17M-B**
**Ordering code**

Art. no.	Type	Function	Contacts	Voltage range
326001029	XT-17M-A	Delay-on	1 C/O	12 - 240 VAC/DC, 50/60 Hz
<b>326001030</b>	<b>XT-17M-B</b>	<b>Delay-off</b>	<b>1 C/O</b>	<b>12 - 240 VAC/DC, 50/60 Hz</b>
326001003	XT-17M-C1	Multifunction	1 C/O	12 - 240 VAC/DC, 50/60 Hz
326001004	XT-17M-C3	Multifunction	3 C/O	12 - 240 VAC/DC, 50/60 Hz
326001025	XT-17M-C1/6	Multifunction	1 C/O	24 - 240 VAC, 50/60 Hz or 24 VDC
326001019	XT-17M-D	Delay-on / Delay-off*	2 C/O	12 - 240 VAC/DC, 50/60 Hz
326001020	XT-17M-L	Latching	2 C/O	12 - 240 VAC/DC, 50/60 Hz
326001005	XT-17M-P	Recycler	1 C/O	12 - 240 VAC/DC, 50/60 Hz
326001006	XT-17M-S	Star-delta	2 C/O	12 - 240 VAC/DC, 50/60 Hz
326001021	XT-17M-2XA	Delay-on	2x 1 C/O	12 - 240 VAC/DC, 50/60 Hz
326001026	XT-35M-DC2	Digital time	2 C/O	12 - 240 VAC/DC, 50/60 Hz
326001028	XT-35M-DCL1	Digital twilight switch	1 C/O	230 VAC, 50/60 Hz

\* without auxiliary supply

 **Over 10 million Mors Smitt relays in use in rail transport applications worldwide!**

**Mors Smitt Asia Ltd.**  
 26/F., Casey Aberdeen House  
 38 Heung Yip Road, Wong Chuk Hang  
 Hong Kong  
 Tel: +852 2343 555  
[sales.msa@wabtec.com](mailto:sales.msa@wabtec.com)

**Mors Smitt France SAS**  
 2 Rue de la Mandinière  
 72300 Sablé-sur-Sarthe, France  
 Tel: +33 (0) 243 92 82 00  
[sales.msf@wabtec.com](mailto:sales.msf@wabtec.com)

**Mors Smitt UK**  
 Graycar Business Park,  
 Burton on Trent, DE13 8EN, UK  
 Tel: +44 (0)1283 357 263  
[msu\\_sales@wabtec.com](mailto:msu_sales@wabtec.com)

**Wabtec Netherlands B.V.**  
 Darwinstraat 10,  
 6718 XR Ede, Netherlands  
 Tel: +31 (0)88 600 4500  
[wnl\\_salesupport@wabtec.com](mailto:wnl_salesupport@wabtec.com)

**Mors Smitt Technologies Ltd.**  
 1010 Johnson Drive,  
 Buffalo Grove, IL 60089-6918, USA

**RMS Mors Smitt**  
 19 Southern Court,  
 Keysborough, VIC 3173, Australia  
 Tel: +61 (0)3 8544 1200  
[sales.rms@wabtec.com](mailto:sales.rms@wabtec.com)

(c) Copyright 2022

All rights reserved. Nothing from this edition may be multiplied, or made public in any form or manner, either electronically, mechanically, by photocopying, recording, or in any manner, without prior written consent from Mors Smitt. This also applies to accompanying drawings and diagrams. Due to a policy of continuous development Mors Smitt reserves the right to alter the equipment specification and description outlined in this datasheet without prior notice and no part of this publication shall be deemed to be part of any contract for the equipment unless specifically referred to as an inclusion within such contract. Mors Smitt does not warrant that any of the information contained herein is complete, accurate, free from potential errors, or fit for any particular purpose. Mors Smitt does not accept any responsibility arising from any party's use of the information in this document.