

## /// General purpose relay

### XT-17M-A

Time relay, delay-on, 1 C/O, 16 A



#### Description

The XT-17M-A relay is a single function and single-time relay with possibility of fine timing by a potentiometer. To be controlled by supply voltage or control input.

Universal supply voltage 12...240 VAC/DC 50/60 Hz and 1 change-over contact 16 A, AC1. Visual output indication by a red LED, 1 module wide, 35 mm rail mounting

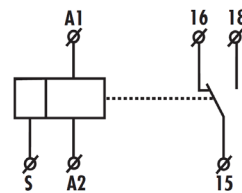
#### Application

Single function delay-on time relay. Suitable for applications where function and time requirements are known. For example to be used for pump delay time, after switching off heating or fan.

#### Features

- Delay-on
- Single function
- Time ranges 0.1 s...100 h
- 1 C/O contact 16 A / AC1
- 35 mm rail mounting
- LED indicator red and green
- Universal supply voltage 12..240 VAC
- Modular housing, 1 module
- Optional time setting by potentiometer

#### Connection diagram



#### Connection



#### Approvals

EN 60255-6  
 EN 61010-1  
 EN 61812-1



## Time relay XT-17M-A

### Time range

|                         |                           |
|-------------------------|---------------------------|
| Time range              | 0.1 s...100 h             |
| Time setting            | Potentiometer             |
| Time deviation          | 5 % mechanical setting    |
| Repeat accuracy         | 0.2 % set value stability |
| Temperature coefficient | 0.01 % / °C at 20 °C      |

### Control

|                                |   |
|--------------------------------|---|
| Load between S - A2            | Yes   |
| Control terminals              | A1 - S  |
| Max. capacity of cable control | 9 nF (AC 230 V), max 20 pcs (1 pc - 1 mA)<br>12 nF without connected glow-lamps |
| Impulse length                 | Min. 25 ms / Max. unlimited   |
| Reset time                     | Max. 150 ms   |

### Output

|                           |   |
|---------------------------|---|
| Contacts                  | 1x change-over contact / SPDT (AgNi/Silver alloy) |
| Rated current             | 16 A / AC1  |
| Breaking capacity         | 4000 VA / AC1, 384 W / DC                         |
| Inrush current            | 30 A / < 3 s                                      |
| Switching voltage         | 250 V AC1, 24 V DC1                               |
| Min. breaking capacity DC | 500 mW  |
| Output indication         | Red LED   |
| Mechanical life           | 10 x 10 <sup>6</sup> operations                   |
| Electrical life (AC1)     | 5 x 10 <sup>4</sup> operations                    |

### Supply and measuring

|                          |                           |
|--------------------------|---------------------------|
| Supply terminals         | A1 - A2                   |
| Supply voltage           | 12...240 VAC/DC, 50/60 Hz |
| Power consumption        | 2 VA / 1.5 W              |
| Supply voltage tolerance | 0.85...1.1 Un             |
| Supply indication        | Green LED                 |

### Mechanical characteristics

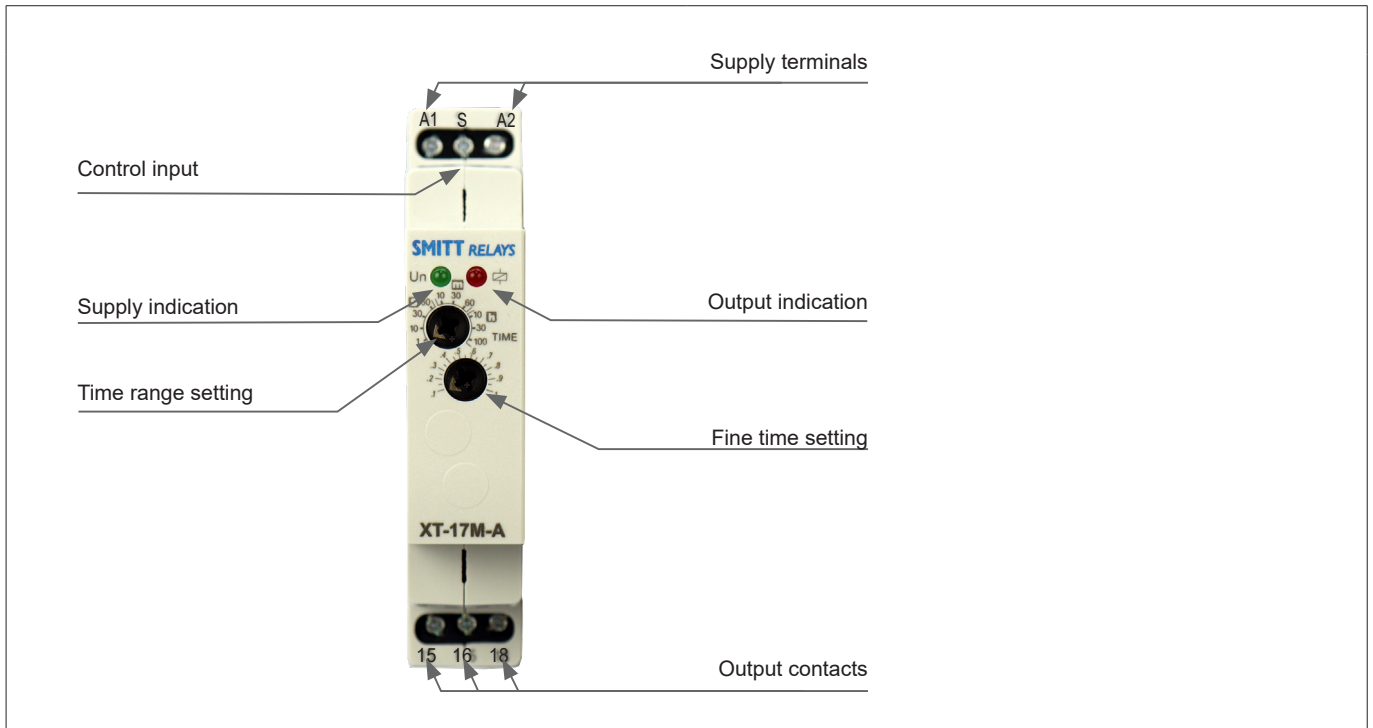
|                        |                   |
|------------------------|-------------------|
| Dimensions (d x w x h) | 90 x 17.6 x 64 mm |
| Weight                 | 61 g              |

### Environmental characteristics

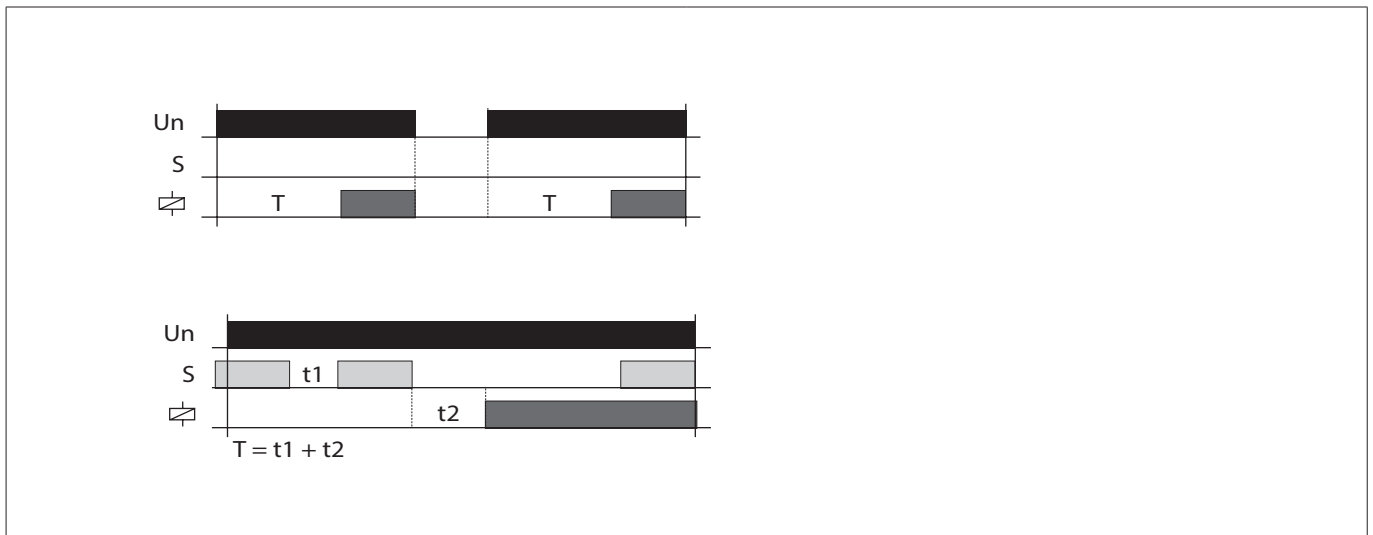
|                       |  |
|-----------------------|--|
| Operating temperature | -20 °C...+55 °C  |
| Storage temperature   | -30 °C...+70 °C  |
| Electrical strength   | 4 kV (supply-output)   |
| Operating position    | Any  |
| Mounting              | 35 mm rail   |
| Protection degree     | IP 40 front panel / IP 20 terminals  |
| Overvoltage category  | III  |
| Pollution degree      | 2  |
| Max. cable size       | Solid wire max. 1 x 2.5 mm <sup>2</sup> or 2 x 1.5 mm <sup>2</sup><br>With sleeve max. 1 x 2.5 mm <sup>2</sup> |

## Time relay XT-17M-A

### Design



### Functions



## Time relay XT-17M-A

### Ordering code

| Art. no.  | Type        | Function                | Contacts | Voltage range                    |
|-----------|-------------|-------------------------|----------|----------------------------------|
| 326001029 | XT-17M-A    | Delay-on                | 1 C/O    | 12 - 240 VAC/DC, 50/60 Hz        |
| 326001030 | XT-17M-B    | Delay-off               | 1 C/O    | 12 - 240 VAC/DC, 50/60 Hz        |
| 326001003 | XT-17M-C1   | Multifunction           | 1 C/O    | 12 - 240 VAC/DC, 50/60 Hz        |
| 326001004 | XT-17M-C3   | Multifunction           | 3 C/O    | 12 - 240 VAC/DC, 50/60 Hz        |
| 326001025 | XT-17M-C1/6 | Multifunction           | 1 C/O    | 24 - 240 VAC, 50/60 Hz or 24 VDC |
| 326001019 | XT-17M-D    | Delay-on / Delay-off*   | 2 C/O    | 12 - 240 VAC/DC, 50/60 Hz        |
| 326001020 | XT-17M-L    | Latching                | 2 C/O    | 12 - 240 VAC/DC, 50/60 Hz        |
| 326001005 | XT-17M-P    | Recycler                | 1 C/O    | 12 - 240 VAC/DC, 50/60 Hz        |
| 326001006 | XT-17M-S    | Star-delta              | 2 C/O    | 12 - 240 VAC/DC, 50/60 Hz        |
| 326001021 | XT-17M-2XA  | Delay-on                | 2x 1 C/O | 12 - 240 VAC/DC, 50/60 Hz        |
| 326001026 | XT-35M-DC2  | Digital time            | 2 C/O    | 12 - 240 VAC/DC, 50/60 Hz        |
| 326001028 | XT-35M-DCL1 | Digital twilight switch | 1 C/O    | 230 VAC, 50/60 Hz                |

\* without auxiliary supply

 **Over 10 million Mors Smitt relays in use in rail transport applications worldwide!**

**Mors Smitt Asia Ltd.**  
 26/F., Casey Aberdeen House  
 38 Heung Yip Road, Wong Chuk Hang  
 Hong Kong  
 Tel: +852 2343 555  
[sales.msa@wabtec.com](mailto:sales.msa@wabtec.com)

**Mors Smitt France SAS**  
 2 Rue de la Mandinière  
 72300 Sablé-sur-Sarthe, France  
 Tel: +33 (0) 243 92 82 00  
[sales.msf@wabtec.com](mailto:sales.msf@wabtec.com)

**Mors Smitt UK**  
 Graycar Business Park,  
 Burton on Trent, DE13 8EN, UK  
 Tel: +44 (0)1283 357 263  
[msu\\_sales@wabtec.com](mailto:msu_sales@wabtec.com)

**Wabtec Netherlands B.V.**  
 Darwinstraat 10,  
 6718 XR Ede, Netherlands  
 Tel: +31 (0)88 600 4500  
[wnl\\_salessupport@wabtec.com](mailto:wnl_salessupport@wabtec.com)

**Mors Smitt Technologies Ltd.**  
 1010 Johnson Drive,  
 Buffalo Grove, IL 60089-6918, USA

**RMS Mors Smitt**  
 19 Southern Court,  
 Keysborough, VIC 3173, Australia  
 Tel: +61 (0)3 8544 1200  
[sales.rms@wabtec.com](mailto:sales.rms@wabtec.com)

(c) Copyright 2022

All rights reserved. Nothing from this edition may be multiplied, or made public in any form or manner, either electronically, mechanically, by photocopying, recording, or in any manner, without prior written consent from Mors Smitt. This also applies to accompanying drawings and diagrams. Due to a policy of continuous development Mors Smitt reserves the right to alter the equipment specification and description outlined in this datasheet without prior notice and no part of this publication shall be deemed to be part of any contract for the equipment unless specifically referred to as an inclusion within such contract. Mors Smitt does not warrant that any of the information contained herein is complete, accurate, free from potential errors, or fit for any particular purpose. Mors Smitt does not accept any responsibility arising from any party's use of the information in this document.